

## Learning from Comprehensive Primary Health Care Experiences: the Central Australian Aboriginal Congress Male Health Program case study

Clive Rosewarne  
Korey Summers



## Thinking globally– acting locally

### HISTORY AND RATIONALE:

- CPHC, (despite the rise of SPHC and neo-liberal health system reforms), has a long history and pockets of development and experience worldwide
- Much of this knowledge has not been systematically and critically gathered
- Collecting and generating new knowledge is important in furthering collective mobilizations in 'the struggle for health'
- Project is funded to combine both research and capacity-enhancement

## The Big Question

### Alma Ata Declaration: 1st International Conf. PHC 1978



Goal: Health for all by 2000  
(the reduction of health disparities both within & between countries)

Strategy: CPHC

## PHC as an approach

Primary Health care incorporates not only the first level of contact with health systems, but also care based on the following:

- a concern for equitable access to health services;
- the involvement of individuals and communities in developing strategies to improve their health;
- a concern for addressing the social and environmental determinants of people's ill-health.

From: Increasing Health Equity through Community Participation in Primary Care: A primary health care approach in Aotearoa New Zealand Dr. Pat Neuwelt 2009

## 'Revitalising Health for All: Learning from Comprehensive Primary Health Care Experiences'

- Three regional groups:
  - South Asia (5)
  - Latin America (both Central and South America 5)
  - Africa (5)
- One international 'Indigenous' group(6): Maori & Aboriginal peoples from Aotearoa/New Zealand, Canada (2 sites), and Australia-CAAC, Utopia & VAHS



## Our project:

### Learning from Comprehensive Primary Health Care Experiences: the LCE project

**Ingkintja or Congress Male Health-** is our research site for developing an evidence base to illustrate how CPHC services attempt to address the social determinants of health.



## LCE PROJECT

· Our overall research question is:  
How does the Congress Male Health Branch' s program of action, reflect the social determinants of health affecting Aboriginal male health, as articulated by Aboriginal males, in the Alice Springs region?

## Aims of the project...to identify and describe:

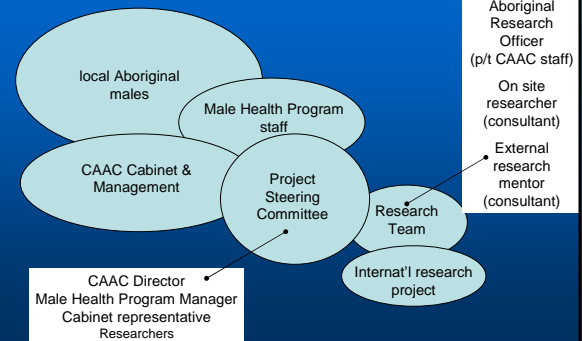
- how the history of the MHP reflected the health needs,
- how issues [local, state and national] shaped the capacity of the program,
- what strategies have been utilised,
- what are the enablers and barriers for the program,
- how have the CAAC management and staff understood these determinants,
- how to increase the MHP's capacity to address these health determinants.



## Methodology

- This research employs a case study approach.
- The project provides research training for the Trainee Aboriginal Research Officer and
- is led by an internally appointed all Aboriginal Steering Committee.

## Who is involved?



## Design and Methods

- **Qualitative methods include:**
  - a literature review,
  - document analysis,
  - key informant interviews and
  - community consultations.
- **Quantitative data;**
  - de-identified service use data and
  - ABS population data.

## Progress report

1. **Capacity Building:**
  - Training plan implemented for trainee-
    - involves, both on-the-job and off-the job elements- accredited VET and tertiary sector training, mentoring, orientations and skills audit.
2. **Data Collection:**
  - -literature review: modest lit review collected most entered to 'Endnote' database.
  - -document analysis: Program document collection almost completed
  - -key informant interviews: 20 key informant (65%) interviews conducted.
  - -group discussions- 1 of 5 completed



### Potential Outcomes for the Project...

- an increase in the knowledge capacity of the MHP to address the social determinants of health,
- a documented history of the MHP,
- a contribution to the Australian literature on the social determinants of Aboriginal male health,
- a contribution to the international research project,
- identification of other important areas worthy of study,
- increase the capacity of the Trainee Aboriginal Research Officer to undertake further research projects.

### Acknowledgements

- Central Australian Aboriginal Congress
  - Ingkintja Congress Male Health & CAAC management.
- Funding:
  - CRCAH
  - Teasdale-Corti Global Health Research Partnership Program (Canada)